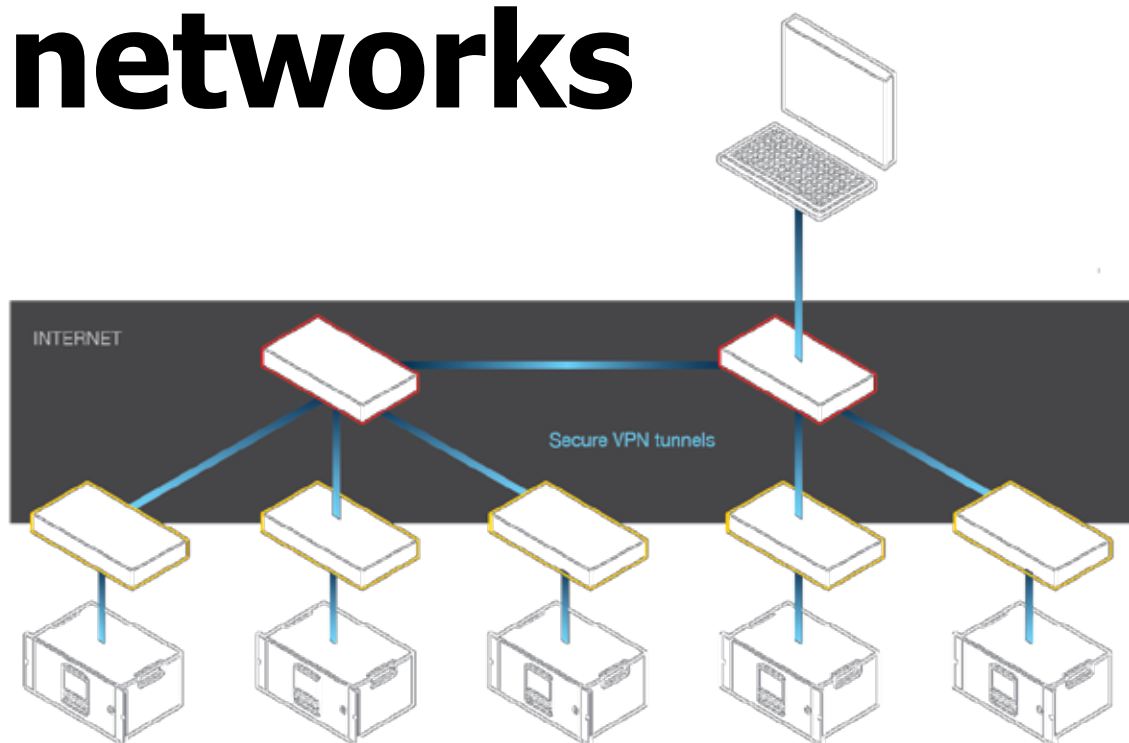


# Remote management of Aethalometer<sup>®</sup> networks



## AethNET<sup>™</sup> network package

**AethNET** is an integrated hardware and software package that connects Aethalometers to a virtual remote management point for instrument control, data storage and analysis. Continuous automatic supervision of operational parameters can create alarms and e-mail notifications to alert operators to any potential problems. Status reports assure managers of maximum data validity up-time. **Remote access** to any connected Aethalometer permits verification of operational parameters, instrument status and data; and permits changes to be made if necessary.

